



Key Signatures and Scales

by Beatrice Wilder

Contents

Worksheet 1	C major scale
Worksheet 2	G major scale
Worksheet 3	D major scale
Worksheet 4	A major scale
Worksheet 5	E major scale
Worksheet 6	B major scale
Worksheet 7	F sharp major scale
Worksheet 8	F major scale
Worksheet 9	B flat major scale
Worksheet 10	E flat major scale
Worksheet 11	A flat major scale
Worksheet 12	A harmonic minor scale
Worksheet 13	E harmonic minor scale
Worksheet 14	D harmonic minor scale
Worksheet 15	B harmonic minor scale
Worksheet 16	Test Your Knowledge 1 - Quiz
Worksheet 17	Test Your Knowledge 2 - Quiz
Worksheet 18	Key Signature Patterns - Sharps
Worksheet 19	Key Signature Patterns - Flats
Worksheet 20	Create a Circle of Fifths - Step One
Worksheet 21	Create a Circle of Fifths - Step Two
Worksheet 22	Enharmonic Equivalents
Worksheet 23	The Complete Circle of Fifths
Worksheet 24	Quiz

Copyright © Beatrice Wilder 1999
First published in 1999 by Music Fun
Revised in 2021 by Music Fun

P.O. Box 342 Katoomba NSW 2780
19 Millyard Lane Katoomba 2780

Phone: 0438 439 984
02 4782 3073

Email: info@musicfun.net.au
Web: www.musicfun.net.au

Please feel free to contact us with any questions about the copying and use of our worksheets in your school as well as information about Australia's current copyright provisions governing educational institutions.

Nearly all of our schools have licenses allowing them to copy and communicate material from our worksheets. If in doubt, please ask us.



Key Signatures and Scales

Worksheet 1

Name

C major scale

C D E F G A B C

Using semibreves, complete the above scale placing each note over its letter name.

Mark all the semitones with slurs

How many sharps are in the key signature?

How many octaves of C major scale have you written?

Using minims (be careful with the stems) write the same scale in the bass.

C D E F G A B C

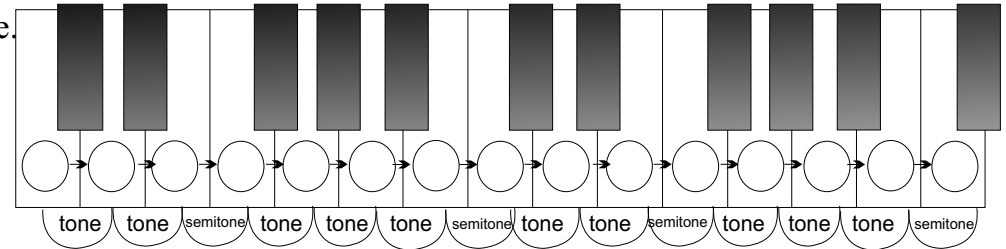
Complete this C major scale and draw the correct clef at the beginning.



How many octaves did you write?

What sort of notes did you use?

C D E F G A B C



Write the correct letter names onto the keyboard.



Key Signatures and Scales

Worksheet 2

Name

G major scale

Name the 5th letter up from C

G A B C D E F G

Complete these scales using minims.

G A B C D E F G

How many octaves of each scale did you write?

Mark the SEMITONES on the first scale and the TONES on the second scale.

The first scale has a key signature. The second scale needs sharp next to a note. Can you name the raised note?

Complete this G major scale in the bass.

G A B C D E F G

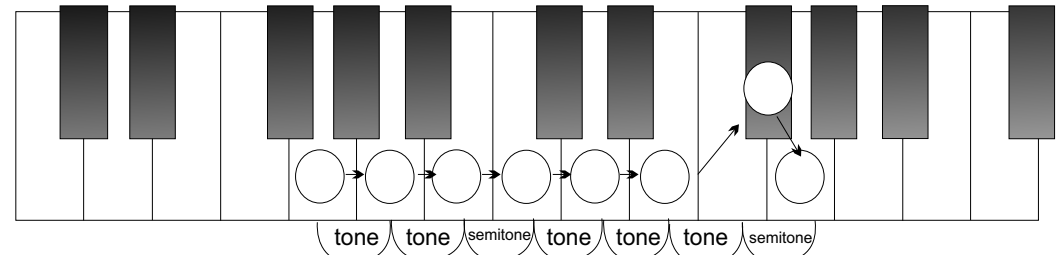
Can you complete this?

T _ _ T _ _ S _ _ _ _ T _ _ T _ _ T _ _ S _ _ _ _

Complete this G major scale and draw the correct clef at the beginning.

Add the correct key signature.

G A B C D E F G



Write the correct letter names onto the keyboard.

Remember the pattern of tones and semitones.

Copy the G major key signatures in the treble and in the bass



Key Signatures and Scales

Worksheet 3

Name

D major scale

Name the 5th letter up from C

Name the 5th letter up from G

Complete these scales using crotchets.

D E F G A B C D

D E F G A B C D

Which sharp was used in G major scale?

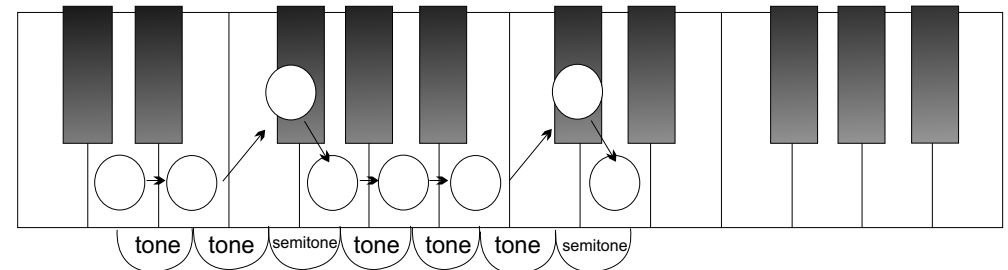
Which new sharp was added?

The first scale has a key signature. Can you name the sharps in the correct order?

Complete this D major scale in the bass. Use quavers.

D E F G A B C D

Complete this D major scale and draw the correct clef at the beginning. Add the correct accidentals.



Write the correct letter names onto the keyboard.

Remember the pattern of tones and semitones.

Between which notes do the SEMITONES occur?

D E F G A B C D

Write the D major key signatures in the treble and in the bass



Key Signatures and Scales

Worksheet 4

Name

A major scale

Name the 5th letter up from C and the 5th letter up from G and the 5th letter up from D Complete these scales.

A B C D E F G A

A B C D E F G A

Name the sharp in G major scale Name the sharps in D major scale in order Name the sharp added for A major.....

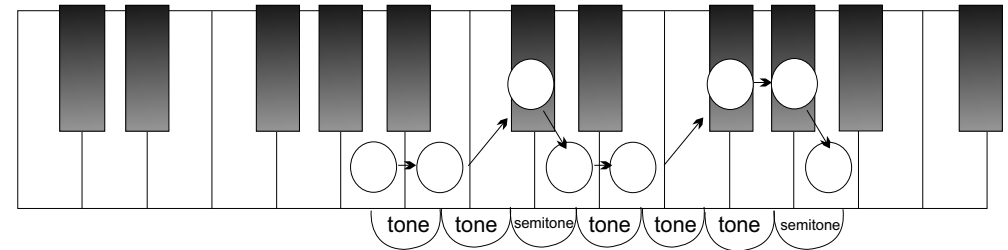
Write the pattern of tones and semitones in a major scale

Complete this A major scale in the bass.

A B C D E F G A

Complete this A major scale and draw the correct clef at the beginning. Add the correct key signature.

A B C D E F G A



Write the correct letter names onto the keyboard.

Remember the pattern of tones and semitones.

Write the A major key signatures in the treble and in the bass



Key Signatures and Scales

Worksheet 5

Name

E major scale

Complete these scales using crotchets.

E F G A B C D E

E F G A B C D E

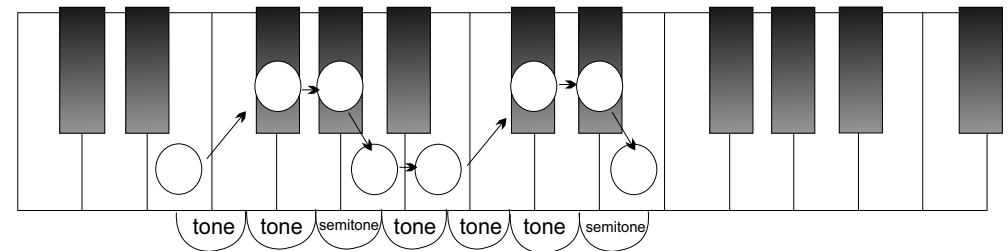
Mark the following True or False:

Between F sharp and G sharp is a semitone E major scale has four sharps D sharp to E is a tone

How many semitones occur in one octave of a major scale?

Complete this E major scale in the bass. Mark the tones.

E F G A B C D E



Write the correct letter names onto the keyboard.

Remember the pattern of tones and semitones.

Write the E major key signatures in the treble and in the bass

E F G A B C D E



Key Signatures and Scales

Worksheet 6

Name

B major scale

Complete these scales using crotchets.

B C D E F G A B

B C D E F G A B

This scale has five sharps. Name them

Name the note that comes after the first semitone

The note after B is The note before E is The interval between C sharp and D sharp is a

Complete this B major scale in the bass.

B C D E F G A B

Complete this B major scale and draw the correct clef at the beginning. Add the correct accidentals

B C D E F G A B

tone tone semitone tone tone tone semitone

Write the correct letter names onto the keyboard.

Remember the pattern of tones and semitones.

Write the B major key signatures in the treble and in the bass



Key Signatures and Scales

Worksheet 7

Name

F sharp major scale

Complete these scales using semibreves.

F G A B C D E F

F G A B C D E F

Name the 5th note down from D How many sharps in one octave of F sharp major scale

The interval between B and C sharp is a The enharmonic equivalent of this scale is: G flat major / A flat major

Complete this F sharp major scale in the bass. Mark semitones with slurs.

F G A B C D E F

tone tone semitone tone tone tone semitone

Write the correct letter names onto the keyboard.

Remember the pattern of tones and semitones.

Write F sharp major key signatures in the treble and in the bass

Complete this F sharp major scale and draw the correct clef at the beginning. Add the correct accidentals.

F G A B C D E F



Key Signatures and Scales

Worksheet 8

Name

F major scale

Complete these scales using semibreves.

F G A B C D E F

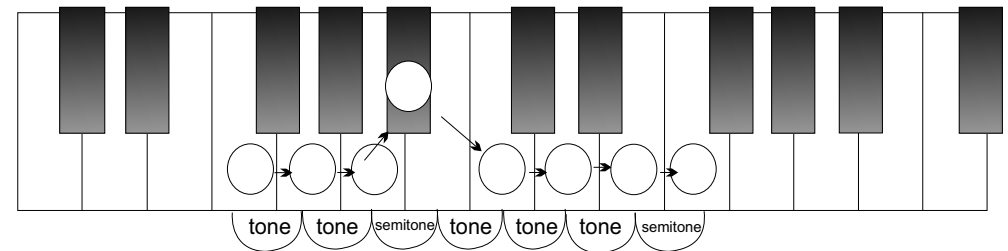
F G A B C D E F

Name the 5th note down from C How many sharps does G major scale need? How many flats does F major scale need?

Which note in this scale needs to be lowered by one semitone? Name the interval between E and F?

Complete this F major scale in the bass. Mark the semitones with slurs.

F G A B C D E F



Write the correct letter names onto the keyboard.

Remember the pattern of tones and semitones.

Write the F major key signatures in the treble and in the bass

Complete this F major scale and draw the correct clef at the beginning. Add the correct accidental.

F G A B C D E F



Key Signatures and Scales

Worksheet 9

Name

B flat major scale

Complete these scales using crotchets.

B C D E F G A B

B C D E F G A B

This scale begins on a black key? Name it

Name the interval between B flat and C

Intervals:

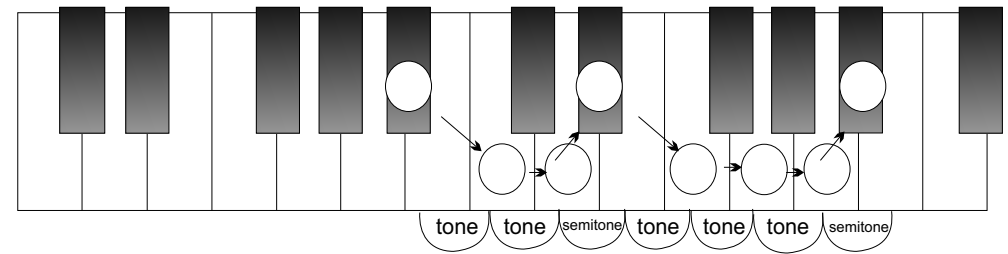
Between C and D is Between F and G is Between E flat and F is Between C and D is

Complete this B flat major scale in the bass.

B C D E F G A B

Complete this B flat major scale and draw the correct clef at the beginning. Add the correct accidentals

B C D E F G A B



Write the correct letter names onto the keyboard.

Remember the pattern of tones and semitones.

Write the B flat major key signatures in the treble and in the bass



Key Signatures and Scales

Worksheet 10

Name

E flat major scale

Complete these scales using crotchets.

E F G A B C D E

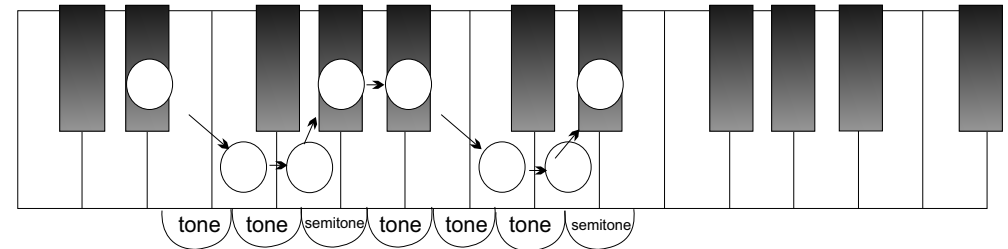
E F G A B C D E

Name the flats in the key signature in the correct order Name the first 3 intervals in a major scale

Name the last 3 intervals in a major scale Name the interval that is in the middle

Complete this E flat major scale in the bass. Use minims.

E F G A B C D E



Write the correct letter names onto the keyboard.

Remember the pattern of tones and semitones.

Write the E flat major key signatures in the treble and in the bass

Complete this E flat major scale and draw the correct clef at the beginning. Add the key signature

E F G A B C D E



Key Signatures and Scales

Worksheet 11

Name

A flat major scale

The note one semitone up from C is and one tone lower than G is the 5th note in the scale is Complete these scales.

A B C D E F G A

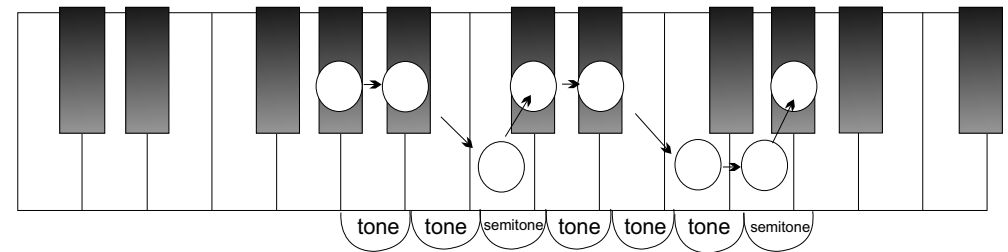
A B C D E F G A

Name the flats in A flat major scale Name the tonic of this scale Name the leading note

Major scales have a pattern of two tones and a semitone at both ends, they are joined in the middle by a:

Complete this A flat major scale in the bass.

A B C D E F G A



Write the correct letter names onto the keyboard.

Remember: the relative minor key of A flat major is F minor.

Write the A flat major key signatures in the treble and in the bass

A B C D E F G A



Key Signatures and Scales

Worksheet 12

Name

A harmonic minor scale

Harmonic minor scales have a RAISED 7th note that is never a part of the key signature It is always written as an accidental

A musical staff with a treble clef. A sharp sign (#) is placed on the F line. Below the staff, the letters A through G are written under their respective lines and spaces.

A B C D E F G A B C D E F G A

Using minims, complete the scale above.

Mark all the semitones with slurs

Mark all the tones with square brackets

Are there any intervals larger than a tone?

Which note needs an accidental?

How many sharps or flats in the key signature?

Using semibreves, write the same scale in the bass. Don't forget the last accidental!

A diagram of a piano keyboard with white circles on each key. Arrows indicate intervals between adjacent keys: tone (white to white), semitone (white to black), tone (black to white), tone (white to white), semitone (white to black), tone and a half (black to white), semitone (white to black), tone (black to white), semitone (white to black), tone (black to white), tone (white to white), semitone (white to black), tone and a half (black to white), semitone (white to black).

Write the correct letter names onto the keyboard.

A musical staff with a bass clef. A sharp sign (#) is placed on the F line. Below the staff, the letters A through G are written under their respective lines and spaces.

A B C D E F G A B C D E F G A

Complete this A minor scale and draw the correct clef at the beginning.

Put in the RAISED 7th in the correct place.

Where does the accidental go?

What sort of accidental did you use?

A musical staff with a single note on the A line. Below the staff, the letters A through G are written under their respective lines and spaces.

A B C D E F G A



Key Signatures and Scales

Worksheet 13

Name

E harmonic minor scale

E F G A B C D E

Using minims, complete the scale above.

Write the pattern of tones and semitones in harmonic minor scales:

.....

Where is the interval larger than a tone?

Which accidental is not in the key signature?

Name the interval between G and A

Using minims, write the same scale in the bass. Put in the key signature and accidental.

E F G A B C D E

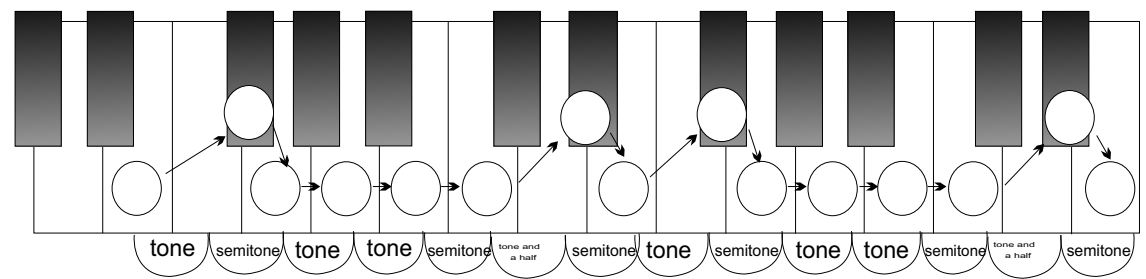
Complete this E minor scale and

draw the correct clef at the beginning.

Use a key signature. Don't forget the raised 7th.

Where does the accidental go?

Which two notes in this scale are raised?



Write the correct letter names onto the keyboard.

Copy the Key Signature

E F G A B C D E



Key Signatures and Scales

Worksheet 14

Name

D harmonic minor scale

D E F G A B C D

Copy the Key Signature

Using semibreves, complete the scale above.

Mark all the semitones with slurs

Name the interval between B flat and C sharp

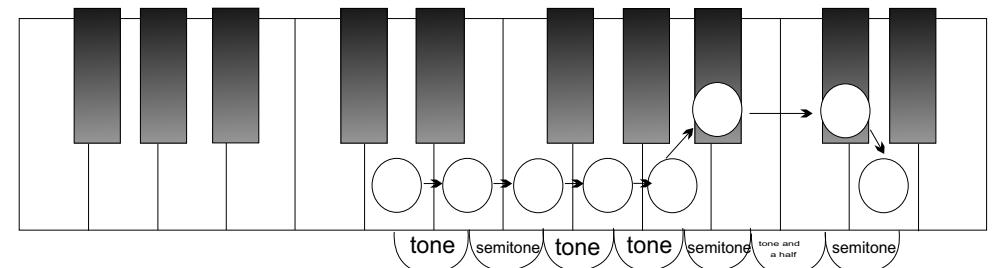
Where is the interval larger than a tone?

Which note is raised a semitone?

Which note is lowered a semitone?

Using crotchets, write the same scale in the bass. Put in the key signature and accidental.

D E F G A B C D



Write the correct letter names onto the keyboard.

Copy the Key Signature

Complete this D minor scale and draw the correct clef at the beginning.

Use a key signature..

Where does the accidental go?

Which note is raised?

D E F G A B C D



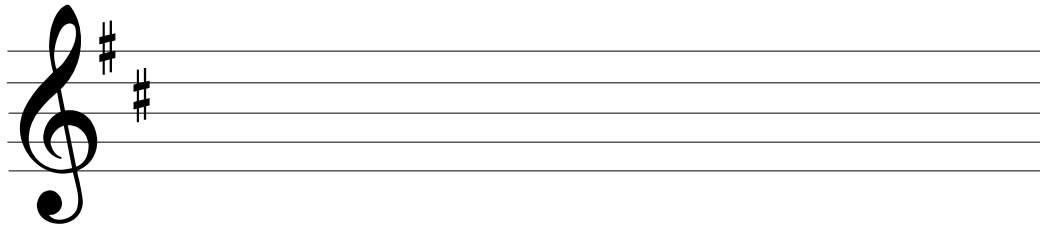
Key Signatures and Scales

Worksheet 15

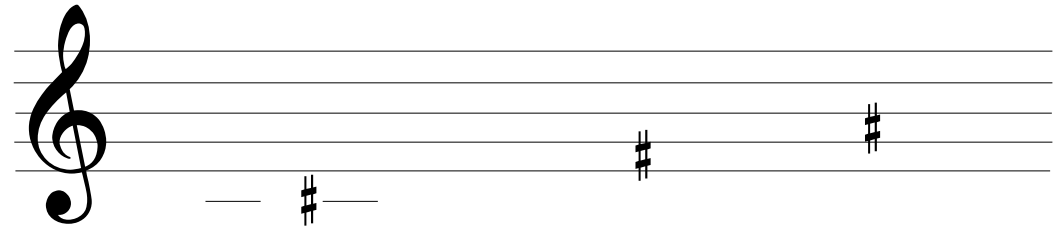
Name

B harmonic minor scale

Complete these scales using crotchets.



B C D E F G A B



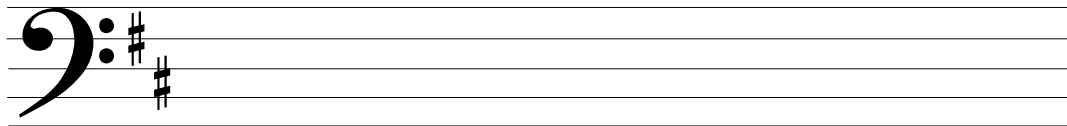
B C D E F G A B

The key signature has two sharps. Name them

Name the sharp note that is not in the key signature

The semitones are between and The interval between D and E is a

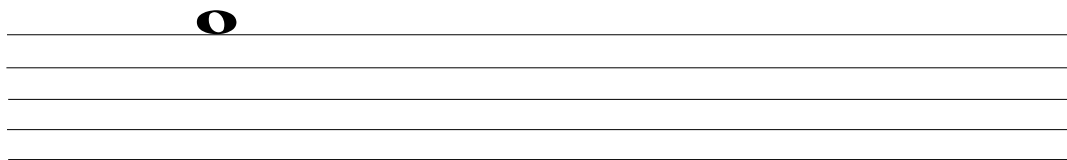
Complete this B minor scale in the bass.



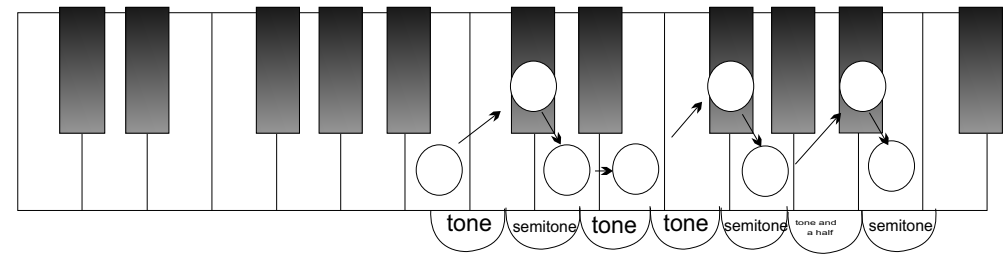
B C D E F G A B

Complete this B minor scale and draw the correct clef at the beginning.

Add the correct accidentals



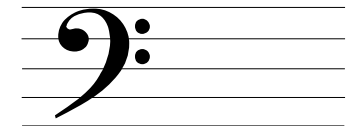
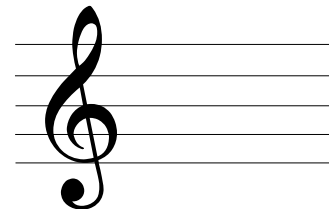
B A G F E D C B



Write the correct letter names onto the keyboard.

Remember the pattern of tones and semitones.

Write the B minor key signatures in the treble and in the bass





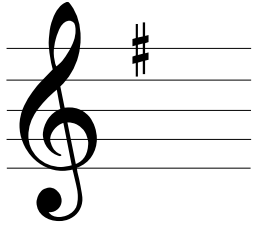
Key Signatures and Scales

Worksheet 16

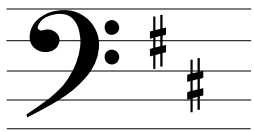
Name

Test your Knowledge 1

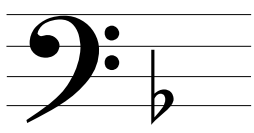
Tick the Correct Answers



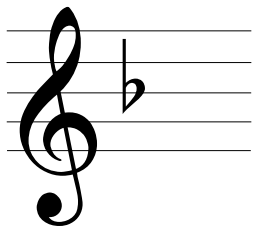
- C major
- D major
- A minor
- G major



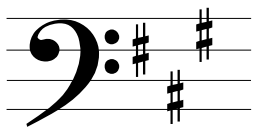
- F major
- D major
- E minor
- G major



- A major
- D major
- D minor
- E flat major

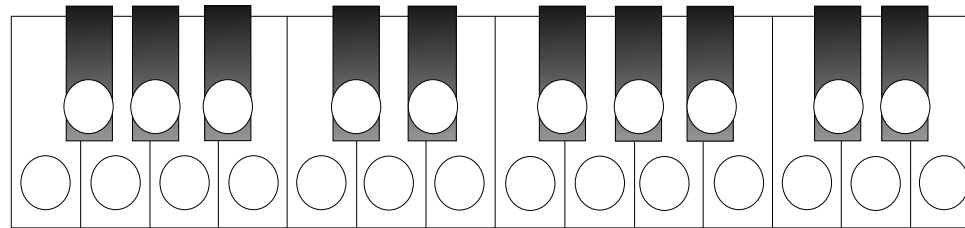


- B flat major
- D major
- A minor
- F major

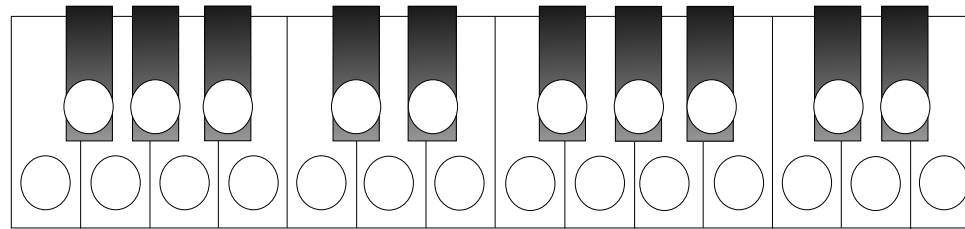


- E major
- A major
- A minor
- E minor

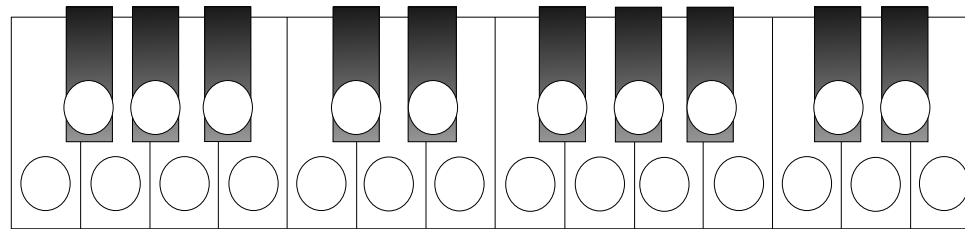
Colour the circles to create the scales of:



F MAJOR

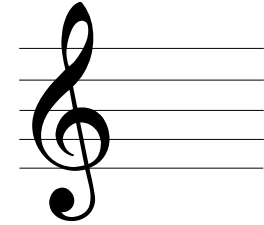


E MAJOR

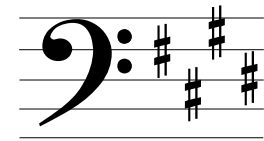


B FLAT MAJOR

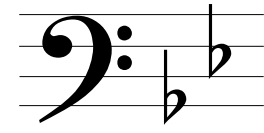
Tick the Correct Answers



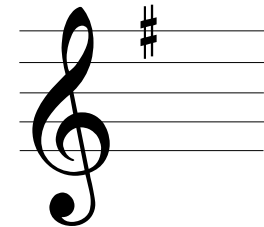
- C major
- D major
- E minor
- G major



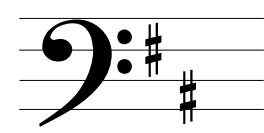
- E major
- E flat major
- E minor
- G major



- A major
- B flat major
- D minor
- E flat major



- F major
- D minor
- E minor
- F minor



- E major
- D major
- A minor
- E minor



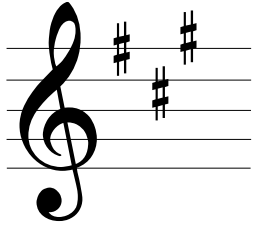
Key Signatures and Scales

Worksheet 17

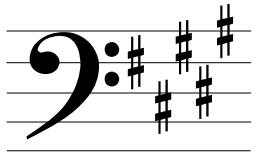
Name

Test your Knowledge 2

Tick the Correct Answers



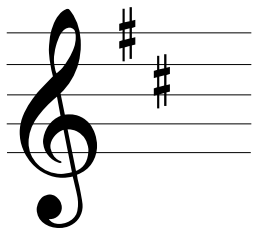
- F major
- D major
- A minor
- A major



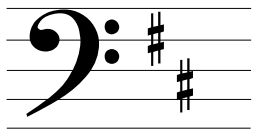
- A major
- B major
- B minor
- E major



- A flat major
- D flat major
- D minor
- E flat major

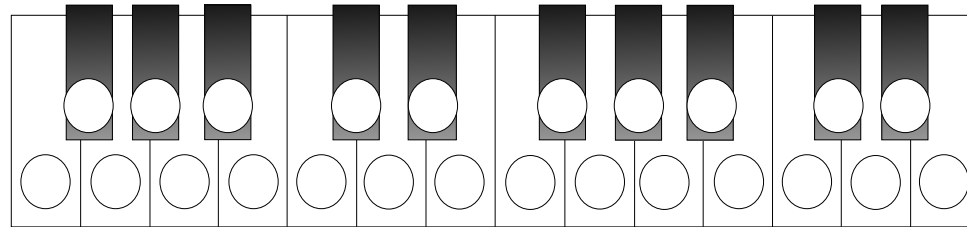


- F major
- D major
- G minor
- A major

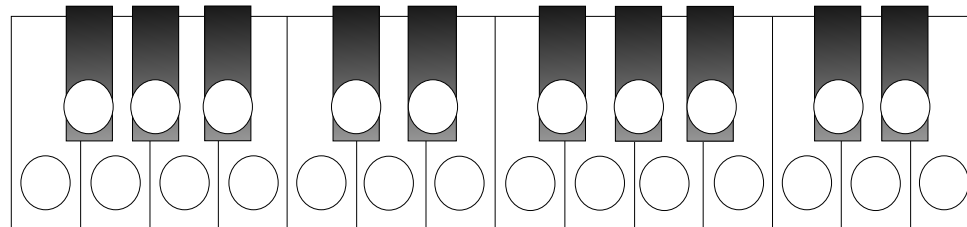


- E minor
- A major
- B minor
- F minor

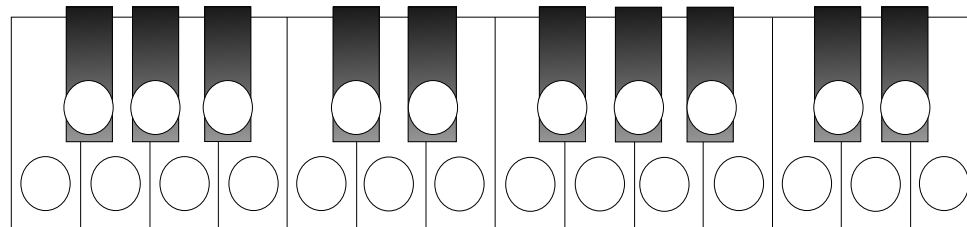
Colour the circles to create the scales of:



F SHARP MAJOR



B MAJOR



E FLAT MAJOR

Tick the Correct Answers



- G major
- F major
- F minor
- D major



- A flat major
- E flat major
- E minor
- F minor



- G minor
- A major
- D minor
- B major



- B major
- A minor
- E minor
- E major



- F major
- G major
- A minor
- D minor

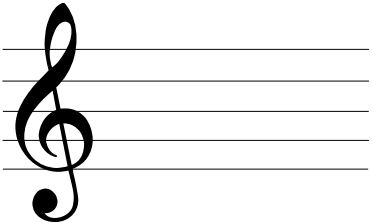
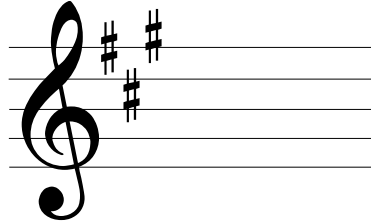
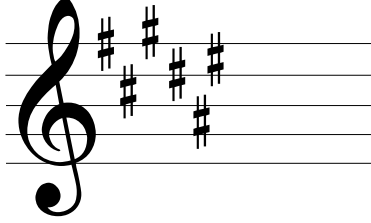
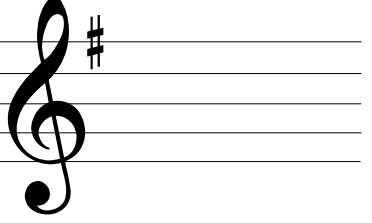
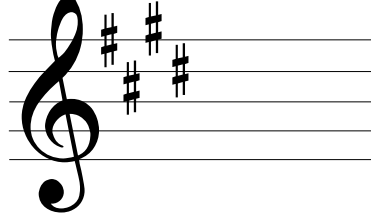
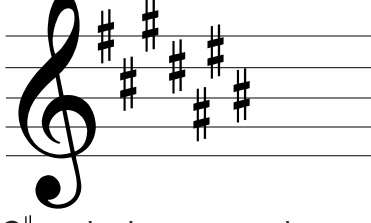
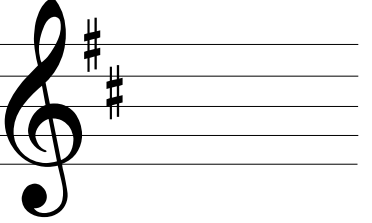
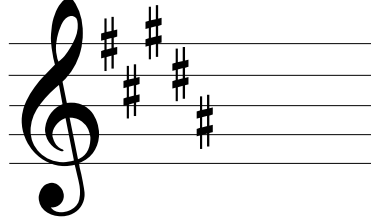
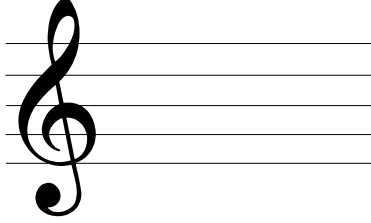


Key Signatures and Scales

Worksheet 18

Name

Key Signature Patterns - Sharps

 <p>C major has no sharps or flats Its relative minor key is A minor They share the same key signature.</p>	 <p>A major has three sharps. F# C# and G# A is a perfect fifth after D</p> <p>Its relative minor key is F minor</p>	 <p>F# major has six sharps. F# C# G# D# A# and E# F is a perfect fifth after B</p> <p>Its relative minor key is D# minor</p>
 <p>G major has one sharp: F sharp. G is a perfect fifth after C A perfect fifth is an interval of seven semitones. Its relative minor key is E minor</p>	 <p>E major has four sharps. F# C# G# and D# E is a perfect fifth after A</p> <p>Its relative minor key is C# minor</p>	 <p>C# major has seven sharps. F# C# G# D# A# E# B# C# is a perfect fifth after F#</p> <p>Its relative minor key is A# minor</p>
 <p>D major has two sharps: F sharp and C sharp. D is a perfect fifth above G</p> <p>Its relative minor key is B minor</p>	 <p>B major has five sharps. F# C# G# D# and A# B is a perfect fifth after E</p> <p>Its relative minor key is G# minor</p>	 <p>Place all seven sharps in their correct positions. Write the letter names of the sharps here:</p>

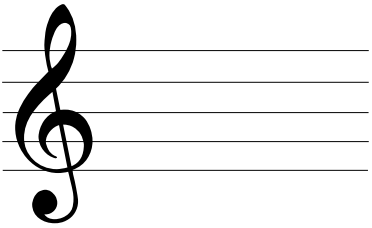


Key Signatures and Scales

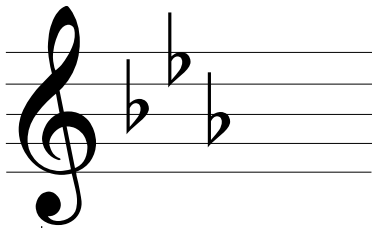
Worksheet 19

Name

Key Signature Patterns - Flats



C major has no sharps or flats
Relative minor key is A minor



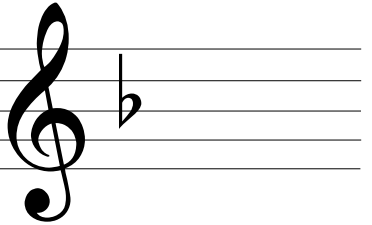
E \flat major has three flats. B \flat , E \flat and A \flat
E \flat is a perfect fifth below B \flat

Its relative minor key is C minor

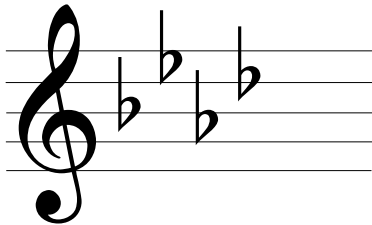


G \flat major has six flats. B \flat E \flat A \flat D \flat G \flat C \flat
G \flat is a perfect fifth below D \flat

Its relative minor key is B minor

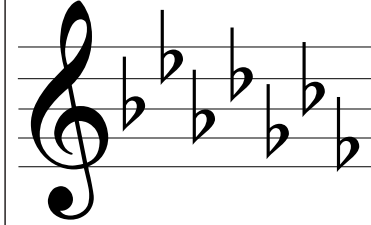


F major has one flat: B flat.
F is a perfect fifth below C
F is also a perfect fourth above C
A perfect fourth is an interval of five semitones.
Its relative minor key is D minor



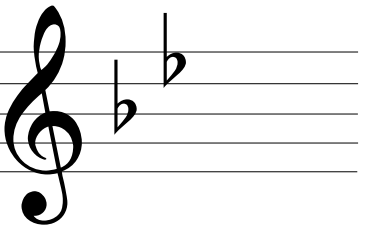
A \flat major has four flats. B \flat E \flat A \flat D \flat
A \flat is a perfect fifth below E \flat

Its relative minor key is F minor



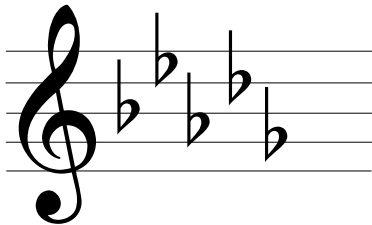
C \flat major has seven flats. B \flat E \flat A \flat D \flat G \flat C \flat F \flat
C \flat is a perfect fifth below G \flat

Its relative minor key is B minor



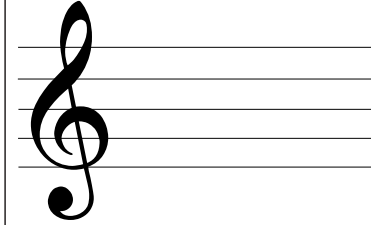
B \flat major has two flats: B \flat and E \flat
B \flat is a perfect fifth below F

Its relative minor key is G minor



D \flat major has five flats. B \flat E \flat A \flat D \flat G \flat
D \flat is a perfect fifth below A \flat

Its relative minor key is B minor



Place all seven flats in their correct positions
Write the letter names of the flats below:

Note: It is the exact reverse of the order of sharps



Key Signatures and Scales

Worksheet 20

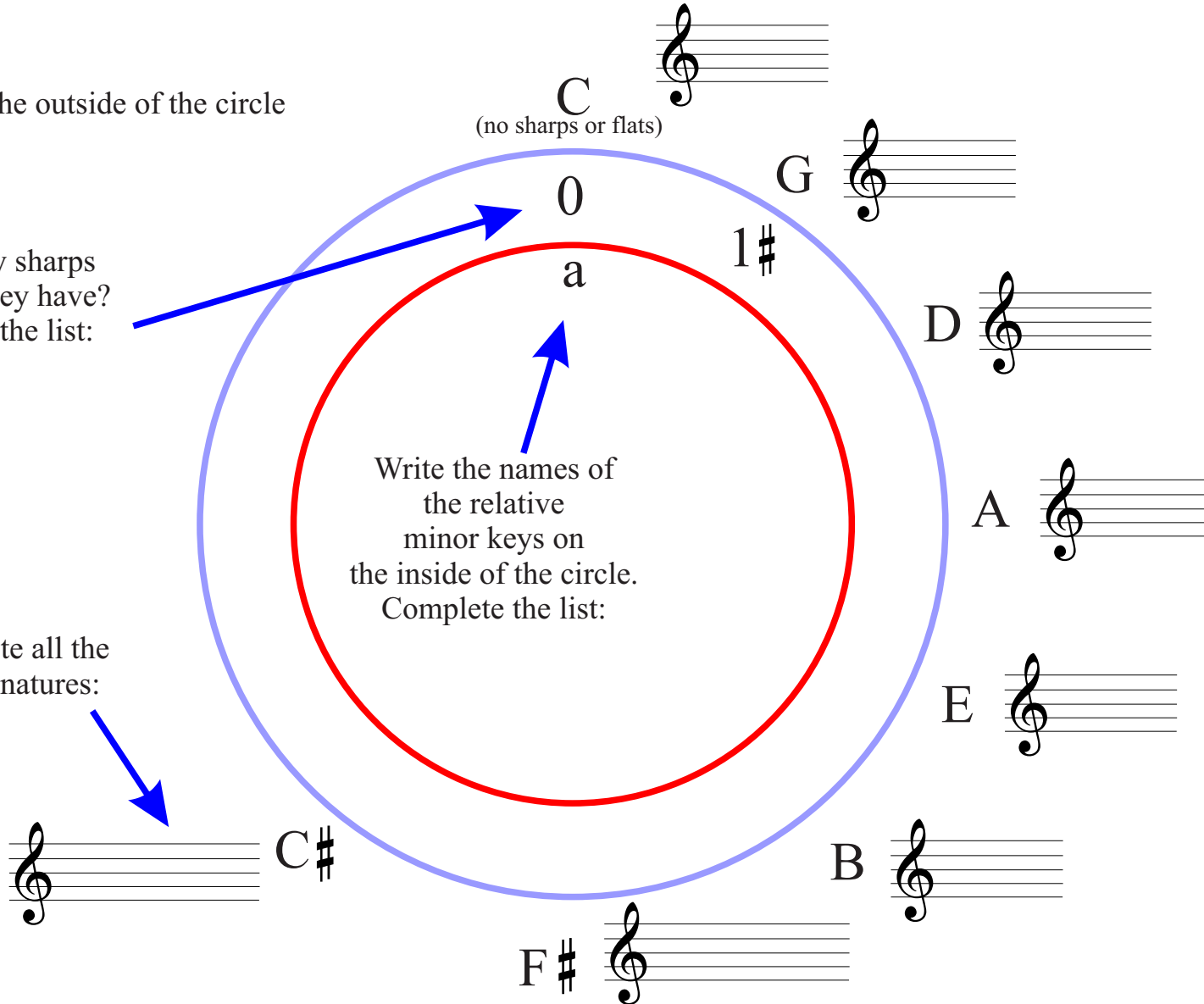
Name

Create a Circle of Fifths - Step One

Major keys are on the outside of the circle

How many sharps does each key have?
Complete the list:

Complete all the key signatures:





Key Signatures and Scales

Worksheet 21

Name

Create a Circle of Fifths - Step Two

Major keys are on the outside of the circle

How many flats does each key have?
Complete the list:

Write the names of the relative minor keys on the inside of the circle.
Complete the list

Complete all the key signatures:

C
(no sharps or flats)

F

B \flat

E \flat

A \flat

D \flat

G \flat

c

a

C \flat



Key Signatures and Scales

Worksheet 22

Name

Enharmonic Equivalents

Name these notes that sound the same but a different name. They are enharmonic equivalents. The first one is done for you:

C# and D♭	B# and	# and E♭
F# and ♭	A♭ and #	C♭ and
# and E♭	G♭ and #	# and E
B♭ and #	A# and ♭	E# and

Colour the dots on the keyboard

Name the key:

Colour the dots on the keyboard

Name the key:

Colour the dots on the keyboard

Name the key:

Colour the dots on the keyboard

Name the key:

Colour the dots on the keyboard

Name the key:

Colour the dots on the keyboard

Name the key:

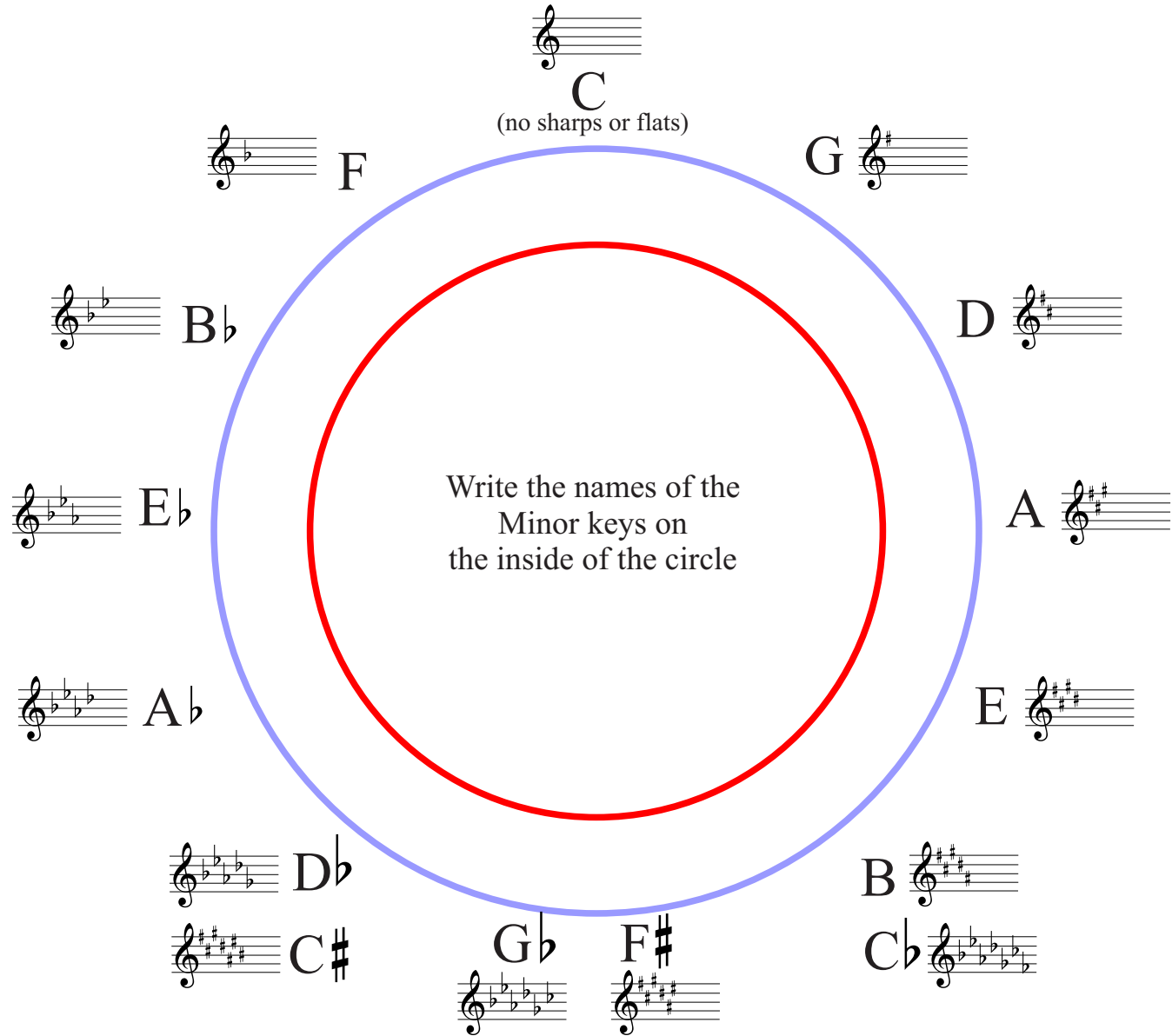


Key Signatures and Scales

Worksheet 23

Name

The Complete Circle of Fifths





Key Signatures and Scales

Worksheet 24

Name

Quiz

Write these notes in their pairs onto the bars below. Each pair into the same bar.

Use minims and draw lines to where they are to be found on the keyboard.

Write half of the pairs onto the treble stave and half onto the bass stave.

F# Gb	B# C	E Fb	Ax B	C# Db	G# Ab
D# Eb	A# Bb	Cx D	E# F	Cbb A#	Cb B